



PALLET CONVEYOR

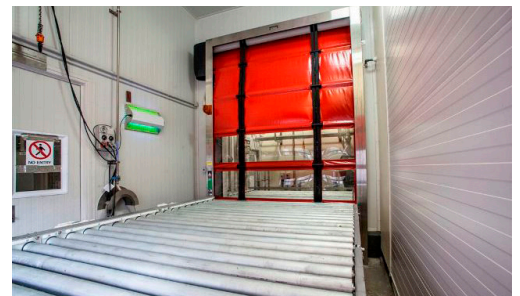
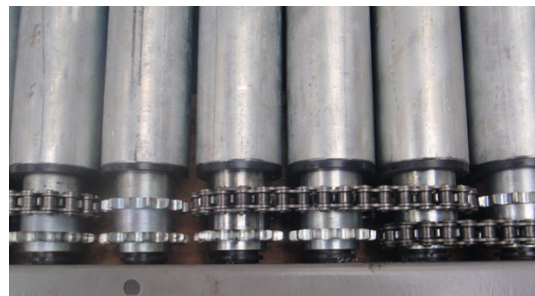
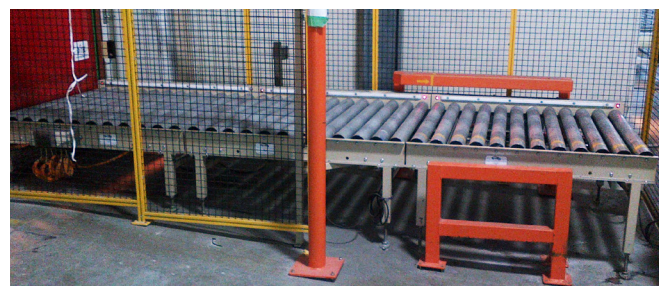
Dyno's pallet conveyors are designed to transport heavy and bulky goods efficiently from A to B. With load ratings up to 2000kg, these heavy duty systems are an outstanding design and are exceptionally reliable. Low profile design means they can easily be integrated and automated with other pallet handling equipment including turntables, lifters, transfers and stretch wrappers. Decreased forklift use reduces risk of injury and increases efficiencies. The systems are remarkably robust, meaning they can endure the daily toil for years on end without the risk of breakdown and downtime.

Features & Benefits

- Can convey up to 2000kg (higher weights can be designed and accommodated for)
- Customised designs
- Stainless Steel or Mild Steel - Powder Coated Construction
- Transmission Guards
- Integration with Pallet handling equipment
- Zero Pressure systems can be accommodated for
- Health & Safety Benefits - Decreased forklift work
- Hint: For gravity applications two single sections of conveyor can be used, this not only reduces costs but allows you to be able to walk down the centre of the conveyor to move your pallet
- Variety of driving methods:
 - Polyurethane drive bands
 - Mini vee Belts
 - Coupling Chain

Uses

- Warehousing
- Dispatch and packing
- Manufacturing



Auckland 09 320 5535
 Canterbury 03 307 0044
 Southland 03 216 1440

Freephone 0800 144 044
 Email sales@dyno.co.nz
www.dyno.co.nz