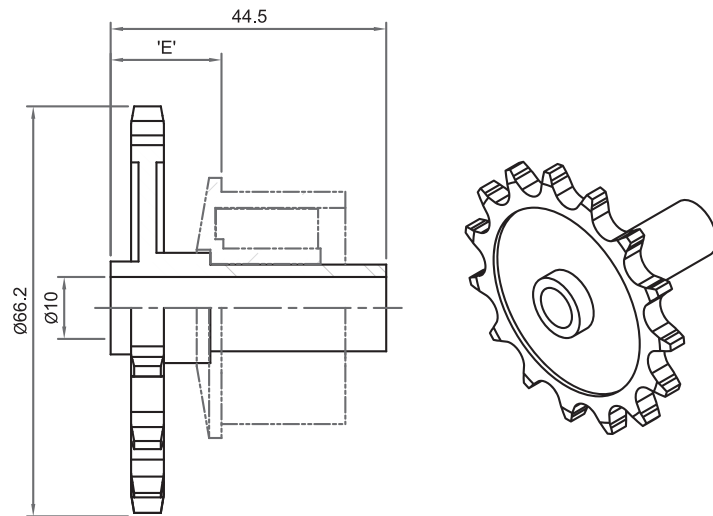


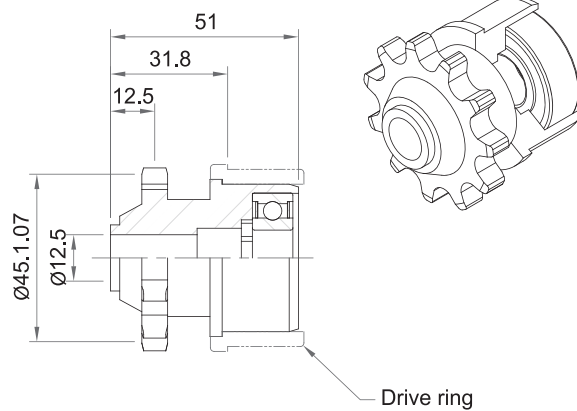
SP6 / SP10 Lightweight Roller Drive

- White Acetal.
- Effective bush bearing.
- ½" pitch (takes B.S. chain).
- 15 tooth.
- Fits range of end caps.
- Bore size
 - SP6 (6.5mm)
 - SP10 (10mm)



Z11S Sprocket

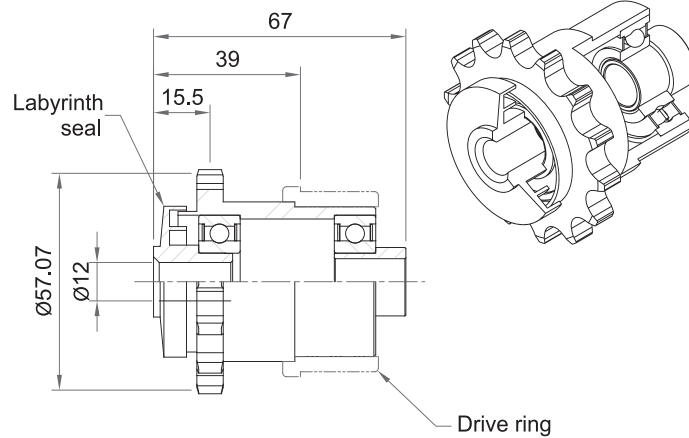
- Black nylon body.
- 6202 precision bearing (Inner).
- Black nylon bush bearing (Outer).
- 11 tooth.
- ½" pitch.
- Fixed drive (Z11SF).
- Loose (Z11SL).
- Fits range of tube sizes with adaptors (see drive ring details).
- Standard 12mm bore (other sizes special order).
- Options;
 - Stainless steel precision bearing
 - Blind bush on outer



SPROCKETS

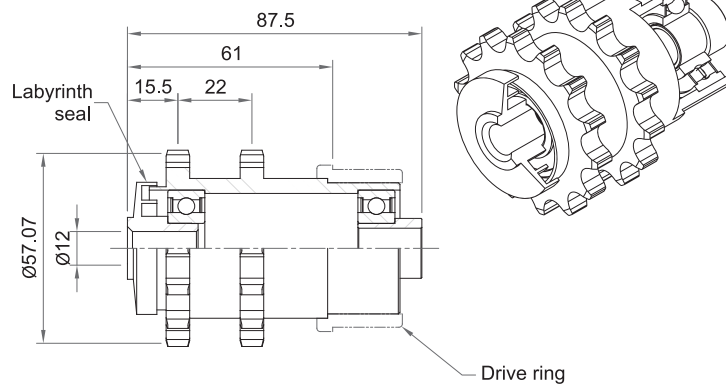
Z14S Single Row

- Black nylon body.
- Black polypropylene labyrinth & reducer bush.
- 14 tooth.
- ½" pitch.
- Fixed drive (Z14SF).
- Loose (Z14SL).
- Fits range of tube sizes with adaptors.
- Standard 12mm bore. (other sizes special order)
- Can be fitted with any 507 series labyrinth for other shaft sizes.
- Option; Stainless steel precision bearings



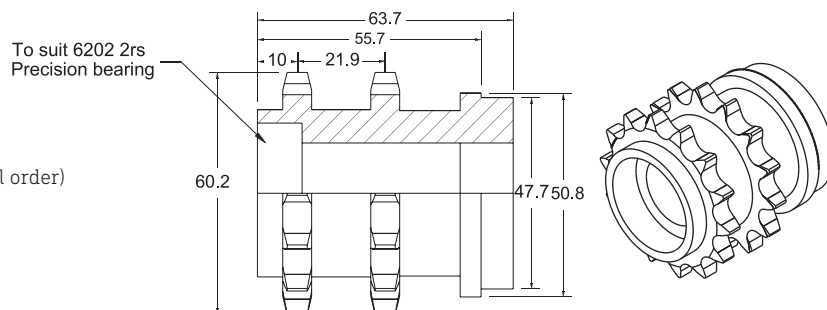
Z14D Double Row

- Black nylon or zinc plated steel body*.
- Black polypropylene labyrinth & reducer bush.
- 14 tooth.
- ½" pitch.
- Fixed drive (Z14DF).
- Loose (Z14DL).
- Fits range of tube sizes with adaptors.
- Standard 12mm bore.
- Can be fitted with any 507 series labyrinth for other shaft sizes.
- Option; Stainless steel precision bearings
- Zinc Plated Steel Type: ZM14D



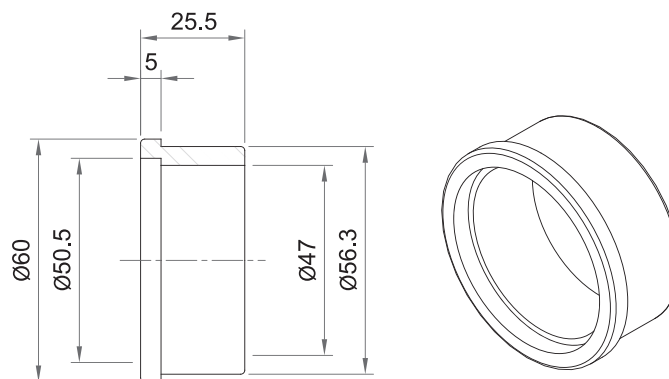
ZMW14D Double Row (weld in)

- Zinc plated steel body
- 14 tooth
- ½" pitch
- Fits 50 x 1.5mm Steel Tube
- Standard bore 12mm (other sizes special order)



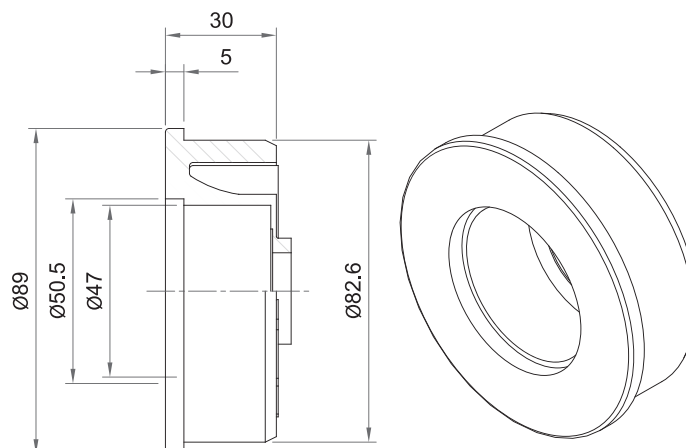
AD60 Adaptor

- Black nylon.
- Suits;
 - 60 x 2.3 tube - Galv. steel
 - S/S (sch. 10)



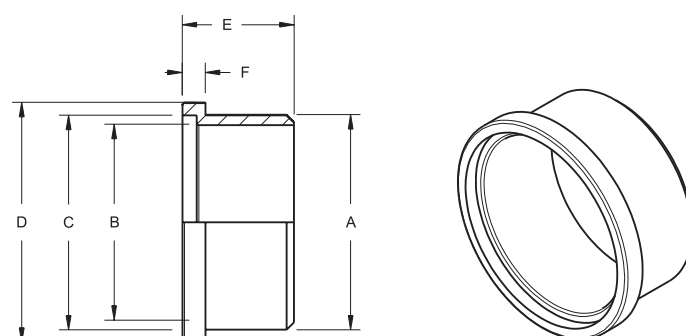
AD89 Adaptor

- Black polycarbonate.
- Suits;
 - 89 x 3.2 tube - Galv. steel (80 NB light)
 - S/S (80 NB sch. 10)
 - Aluminium



DR-F/L Drive Ring Details

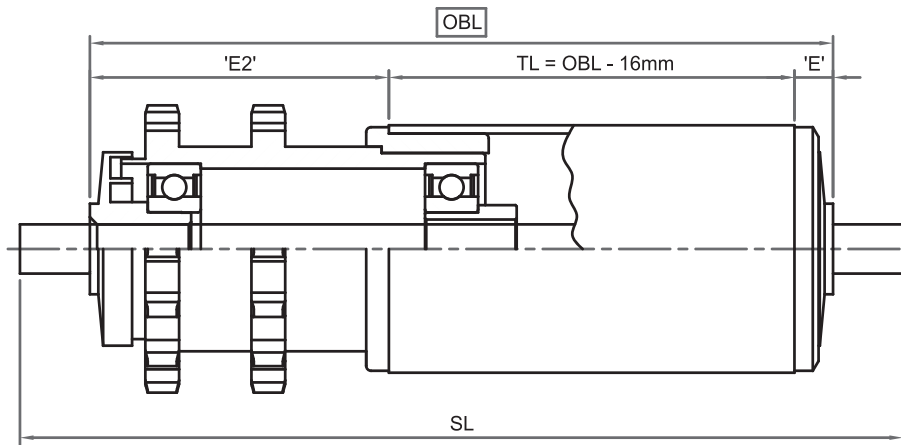
- Fixed (F) black nylon.
- Loose (L) black acetal. (For Accumulation)
- Suits;
 - 50 x 2.8 Dynopipe
 - 50 x 1.6 tube - Galv. steel
 - Aluminium
 - 50.8 x 1.85 - Galv. steel
 - 50.8 x 2 - S/S
 - 60mm adaptors
 - 89mm adaptors



	Fixed 2.8	Loose 2.8	Fixed 1.5	Loose 1.5
A	44.7mm	44.6mm	47.25mm	47.2mm
B	39.3mm	40.6mm	39.4mm	40.6mm
C	42.5mm	44.6mm	42.6mm	44.6mm
D	50mm	49.7mm	50mm	50mm
E	25.2mm	25.2mm	25.2mm	25.2mm
F	5mm	5mm	5mm	5mm

DRIVEN ROLLERS

Driven Roller Tube Diameter - 50, 60, & 89mm



	'E'			'E2'
	Tube Size			Ø50, Ø60, & Ø89mm
	Ø50mm	Ø60mm	Ø89mm	
Z11S	8	7.5	9.5	32
Z14S	8	7.5	9.5	39
Z14D	8	7.5	9.5	61
TB20	8	7.5	9.5	49.5
Bearing Type	507	607	897	
Accumulating Pressure	4 - 7%	2 - 5%	1 - 3%	
Double accumulating pressure for double ended drive				

- Standard Ø12, & Ø16mm shaft.
- Max. product weight 200kg.
- Max. total product weight on conveyor 2 tonne.
- Max. length of conveyor – 50 rollers or 15m each direction from drive, whichever is greater.
- Speed;
 - Chain sprocket 30 m/min (without excessive noise).
 - Toothed belt 90 m/min.